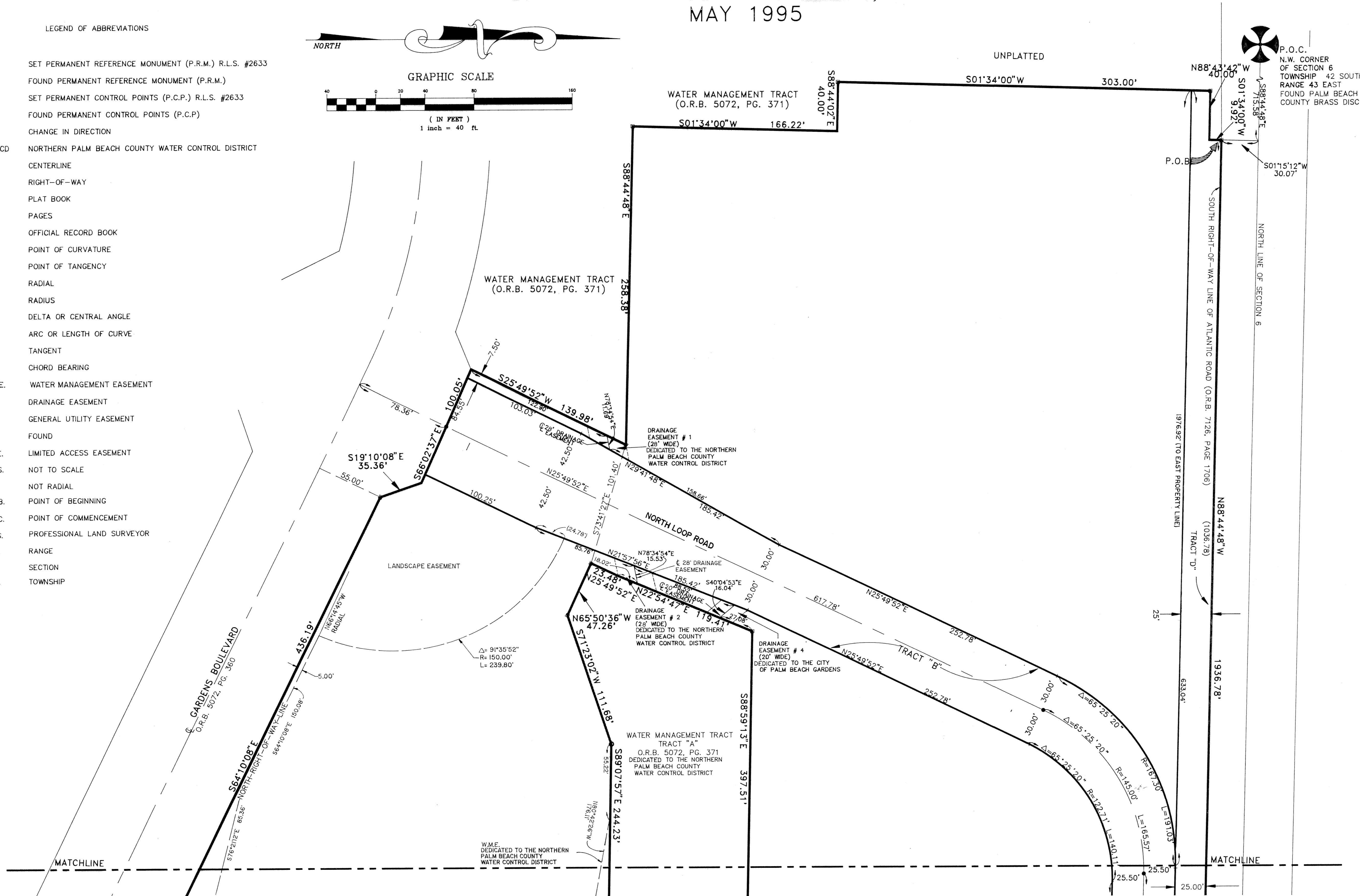
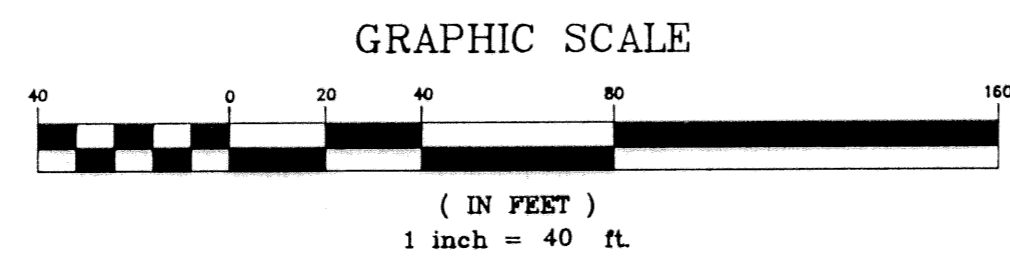
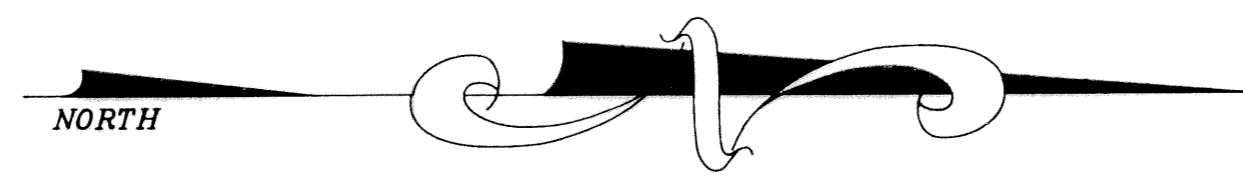


MIRA FLORES

LYING IN SECTION 6, TOWNSHIP 42 SOUTH, RANGE 43 EAST, PALM BEACH COUNTY, FLORIDA
CITY OF PALM BEACH GARDENS, FLORIDA
MAY 1995

LEGEND OF ABBREVIATIONS

- ▣ SET PERMANENT REFERENCE MONUMENT (P.R.M.) R.L.S. #2633
- FOUND PERMANENT REFERENCE MONUMENT (P.R.M.)
- SET PERMANENT CONTROL POINTS (P.C.P.) R.L.S. #2633
- ▲ FOUND PERMANENT CONTROL POINTS (P.C.P.)
- CHANGE IN DIRECTION
- NPBCWCD NORTHERN PALM BEACH COUNTY WATER CONTROL DISTRICT
- ⊕ CENTERLINE
- R/W RIGHT-OF-WAY
- P.B. PLAT BOOK
- PGS. PAGES
- ORB OFFICIAL RECORD BOOK
- P.C. POINT OF CURVATURE
- P.T. POINT OF TANGENCY
- RAD RADIAL
- R RADIUS
- △ DELTA OR CENTRAL ANGLE
- L ARC OR LENGTH OF CURVE
- T TANGENT
- CH CHORD BEARING
- W.M.E. WATER MANAGEMENT EASEMENT
- DE DRAINAGE EASEMENT
- LE GENERAL UTILITY EASEMENT
- FD. FOUND
- L.A.E. LIMITED ACCESS EASEMENT
- N.T.S. NOT TO SCALE
- N.R. NOT RADIAL
- P.O.B. POINT OF BEGINNING
- P.O.C. POINT OF COMMENCEMENT
- P.L.S. PROFESSIONAL LAND SURVEYOR
- RGE. RANGE
- SEC. SECTION
- TWP. TOWNSHIP



(SHEET 3 OF 4)

SUBDIVISION # Mira Flores
 BOOK 75 PAGE 123
 FLOOD ZONE -
 QUAD # -
 SE -
 PUD NAME C/PB Gardens


**Shalloway, Foy,
Rayman & Newell, Inc.**
 ENGINEERS - PLANNERS - SURVEYORS
 1201 BELVEDERE ROAD, WEST PALM BEACH, FLORIDA 33405, (407) 655-1151

| | |
|-----------------|------------|
| Date | 04/05/1995 |
| Designed | |
| Drawn | C.A.R. |
| Checked | G. RAYMAN |
| Project Manager | B. LAMOTTE |

| | |
|--------------|-------|
| SHEET NO. | 2 |
| TOTAL SHEETS | 4 |
| JOB NO. | 93072 |